

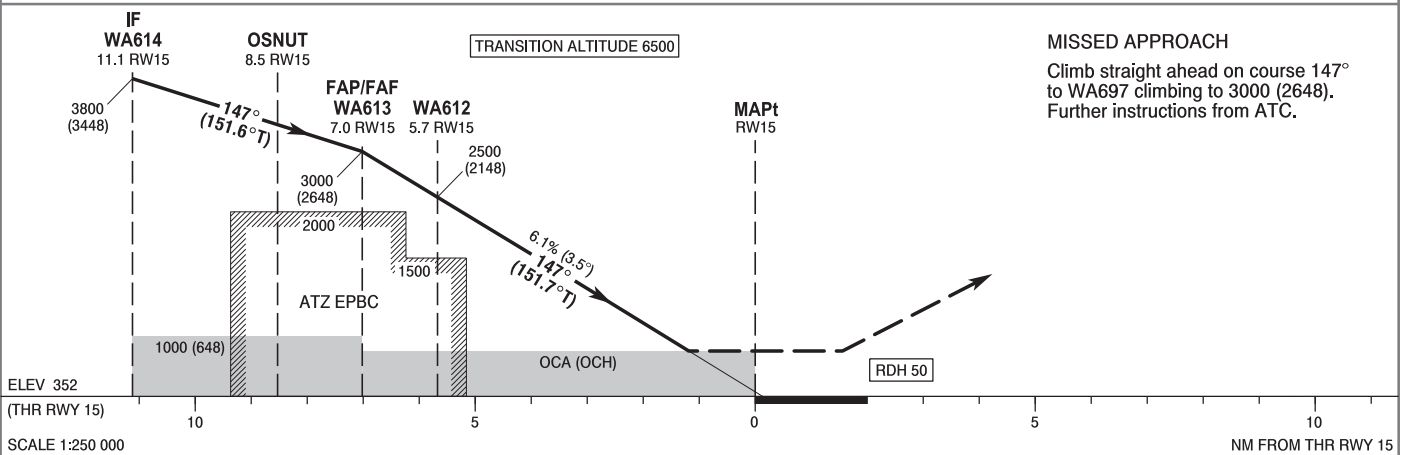
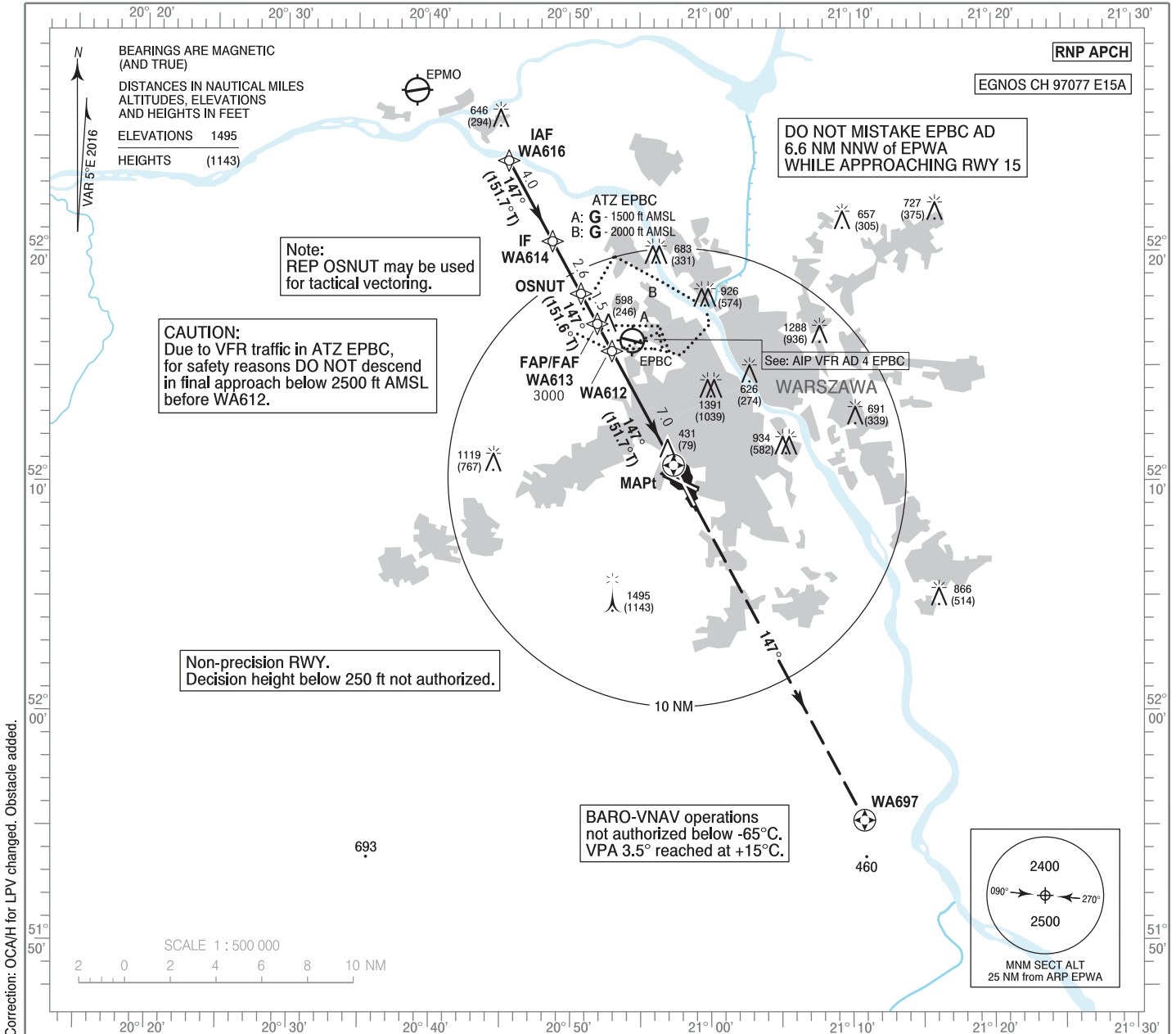
**INSTRUMENT
APPROACH
CHART - ICAO**

AERODROME ELEV 362 ft
THR RWY 15 ELEV 352 ft
HEIGHTS RELATED TO THR RWY 15

Warszawa APPROACH 128.805 Warszawa DIRECTOR 129.380
125.055 Warszawa TOWER 118.305
ATIS 120.455 Okęcie GROUND 121.905

WARSAW CHOPIN AIRPORT

**RNP
RWY 15 (CAT A/B/C/D)**



OCA (OCH)					Distance FAF - MAPt 7.0 NM							
Cat. of ACFT	A	B	C	D	Speed	kt	80	100	120	140	160	
Straight - in	LNAV	850 (498)	850 (498)	850 (498)	850 (498)	Time	min : s	5:16	4:13	3:31	3:01	2:38
	LNAV/VNAV	640 (288)	650 (298)	660 (308)	680 (328)	Rate of descent	ft / min	490	610	740	860	980
	LPV	567 (215)	581 (229)	591 (239)	604 (252)		Final approach distance/altitude (height)					
Circling approaches are prohibited					Distance	6	5	4	3			
					Altitude (height)	2620 (2268)	2250 (1898)	1890 (1538)	1520 (1168)			