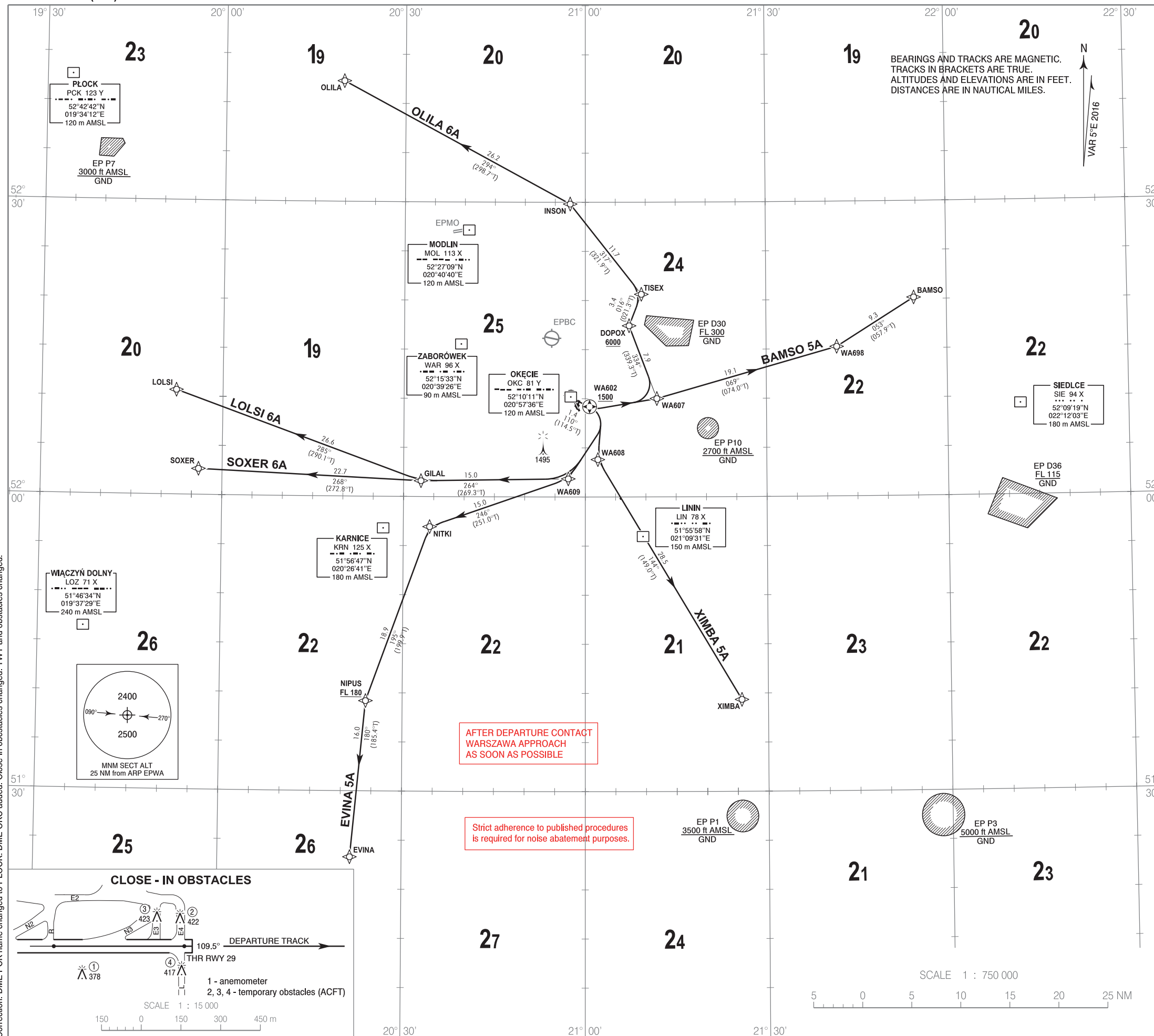


RNAV 1
STANDARD DEPARTURE CHART
INSTRUMENT (SID) - ICAO

TRANSITION ALTITUDE 6500

Warszawa DIRECTOR	129.380	Okęcie GROUND	121.905
Warszawa APPROACH	125.055, 128.805	Okęcie TOWER	118.305
Okęcie DELIVERY	121.605		

WARSAW CHOPIN AIRPORT
RWY 11



1. All aircraft which can not follow and utilize RNAV 1 procedures shall advise ATC before start up. Radar vectoring will be provided, usually along published procedures.
2. Expect direct routing/shortcuts by ATC whenever possible (especially during off-peak hours).
3. MAX IAS during initial turn as indicated in route description.
4. Initial SID climb: climb and maintain 6000 unless otherwise cleared by ATC.
5. Aircraft unable to achieve SID profile restrictions must request non-standard departure from ATC before start-up.

RADIO COMMUNICATION FAILURE PROCEDURE

- SET TRANSPONDER TO 7600
- a) Continue on assigned and acknowledged SID. After 3 minutes climb to FPL flight level.
 - b) If being vectored, continue on assigned heading for 3 minutes, then proceed direct to last SID WP climbing to FPL flight level.

Correction: DME PCK name changed to PŁOCK. DME OKC added. Close-in obstacles changed: TWY and obstacles changed.

AFTER DEPARTURE CONTACT
WARSAWA APPROACH
AS SOON AS POSSIBLE

Strict adherence to published procedures
is required for noise abatement purposes.