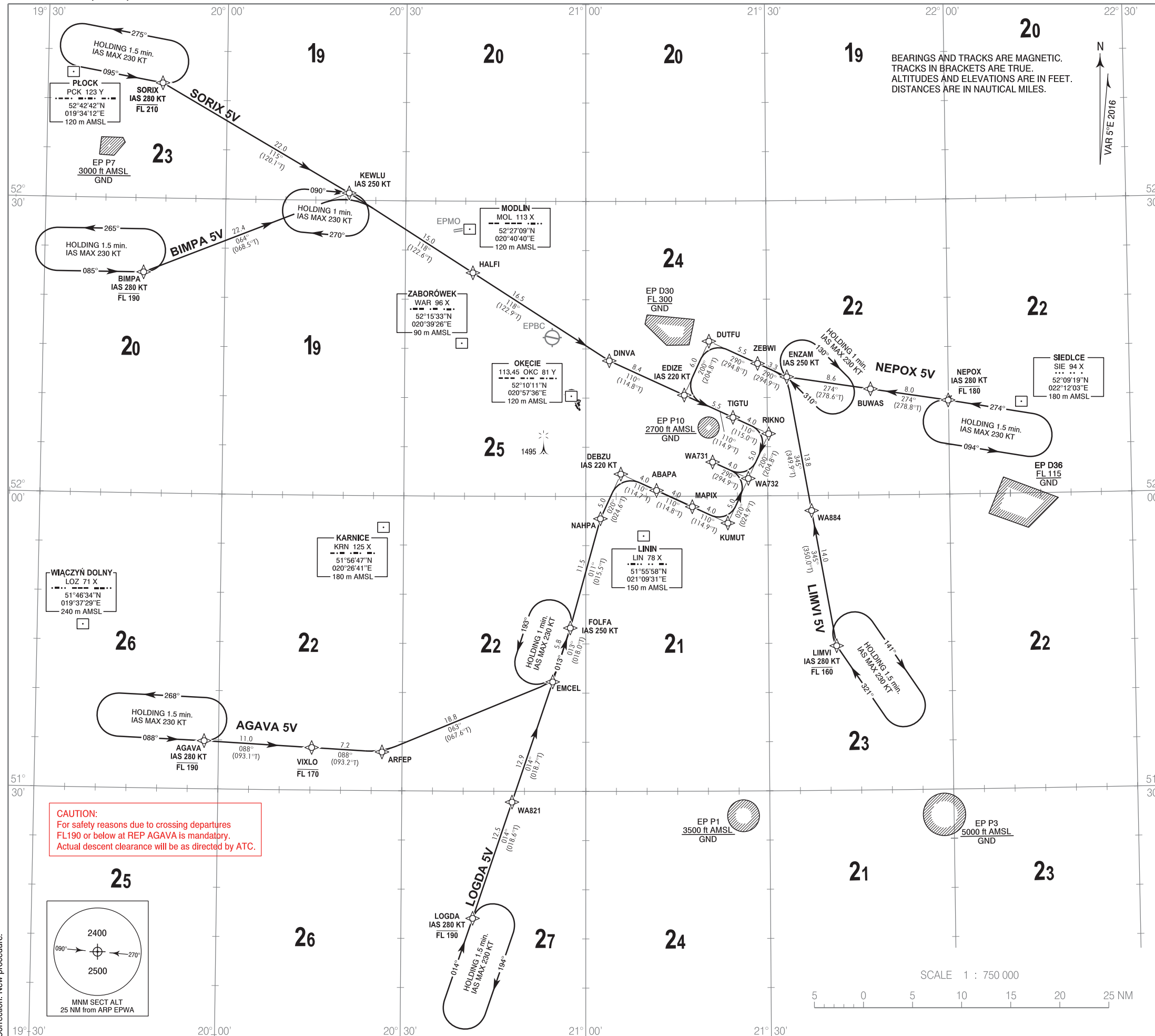


**RNAV 1
STANDARD ARRIVAL CHART
INSTRUMENT (STAR) - ICAO**

TRANSITION ALTITUDE 6500

Warszawa DIRECTOR	129.380	ATIS	120.455
Warszawa APPROACH	125.055, 128.805		
Okecie GROUND	121.905		
Okecie TOWER	118.305		

**WARSAW CHOPIN AIRPORT
RWY 29**



BEARINGS AND TRACKS ARE MAGNETIC.
TRACKS IN BRACKETS ARE TRUE.
ALTITUDES AND ELEVATIONS ARE IN FEET.
DISTANCES ARE IN NAUTICAL MILES.



1. All aircraft which can not follow and utilize RNAV 1 trajectories shall advise ATC upon first contact. Radar vectoring will be provided, usually along published procedures.
2. Holding patterns as directed by ATC, available for non RNAV 1 approved aircraft.
3. Vertical planning information: air crews should plan for possible descent clearance in accordance with vertical restrictions specified on chart. Actual descent clearance will be as directed by ATC. If possible, CDA technique should be applied.
4. Expect direct routing/shortcuts by ATC whenever possible (especially during off-peak hours). The turn to final approach is usually performed by radar vectors to expedite traffic handling and for separation reasons.

CDA (CONTINUOUS DESCENT APPROACH) TECHNIQUE

1. Arrange descent to pass 7000 ft AMSL within 25 track miles to touchdown.
2. Expect track miles information or base leg information from ATC at or above 7000 ft AMSL, but do not turn on base leg until instructed.
3. At or before downwind position maintain IAS 220 KT or minimum clean speed, whichever is greater.

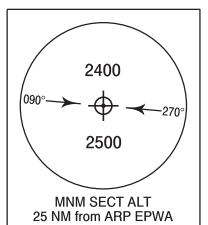
ATC R/T example at or above 7000 ft AMSL:

1. 25 track miles to touchdown, when ready descend.
2. Expect base leg after/before/between WPT.
3. Expect full procedure.

RADIO COMMUNICATION FAILURE PROCEDURE

- RNAV 1 APPROVED AIRCRAFT:**
- a) If STAR was assigned and acknowledged by air crew, set transponder to 7600, continue with FPL and assigned STAR, then execute approach (ILS or VOR) and land. Descending shall be executed in accordance with vertical restrictions specified on chart after 2 min. from setting 7600.
 - b) If STAR was assigned and acknowledged by air crew and vectoring was initiated, set transponder to 7600 and continue on assigned heading and last cleared and acknowledged altitude for 2 min. (from setting 7600). Then proceed direct to FAP/FAF and execute approach (ILS or VOR) and land. Descending shall be executed in accordance with vertical restrictions specified on chart.
 - c) If STAR was not assigned, set transponder to 7600, proceed according to FPL and FPL STAR, execute approach (ILS or VOR) and land. Descending shall be executed in accordance with vertical restrictions specified on chart after 2 min. from setting 7600. If landing is not possible, execute missed approach and proceed to FAP/FAF of most convenient RWY, execute approach (ILS or VOR) and land.
- RNAV 1 NOT APPROVED AIRCRAFT:**
Set the transponder to 7600. Maintain last assigned and acknowledged altitude/flight level. Proceed DVOR/DME WAR. Over DVOR descend to altitude 4000ft. Then proceed FAP ILS RWY 11 (R 115° MAG / D 3.8 NM DVOR/DME "WAR") or FAF VOR RWY 11 (R 123° MAG / D 3.9 NM DVOR/DME "WAR"), execute approach and land. If landing is not possible, execute missed approach and proceed to FAP/FAF of most convenient RWY, execute approach and land.

CAUTION:
For safety reasons due to crossing departures
FL190 or below at REP AGAVA is mandatory.
Actual descent clearance will be as directed by ATC.



Correction: New procedure.

**RNAV 1
STANDARD ARRIVAL CHART
INSTRUMENT (STAR) - ICAO**

**WARSAW CHOPIN AIRPORT
RWY 29**

BIMPA 5V

SEQUENCE NUMBER	PATH TERMINATOR	WAYPOINT IDENTIFIER	COURSE / TRACK °M (°T)	DISTANCE (NM)	ALTITUDE	SPEED (kt)	NAV SPEC
001	IF	BIMPA	-	-	-FL190	-280	RNAV 1
002	TF	KEWLU	064 (068.5)	22.44	-	-250	RNAV 1
003	TF	HALFI	118 (122.6)	15.00	-	-	RNAV 1
004	TF	DINVA	118 (122.9)	16.53	-	-	RNAV 1
005	TF	EDIZE	110 (114.8)	8.40	-	-220	RNAV 1
006	TF	TIGTU	110 (114.9)	5.45	-	-	RNAV 1
007	TF	RIKNO	110 (115.0)	4.00	-	-	RNAV 1
008	TF	WA732	200 (204.8)	5.00	-	-	RNAV 1
009	TF	WA731	290 (294.9)	4.00	-	-	RNAV 1

SORIX 5V

SEQUENCE NUMBER	PATH TERMINATOR	WAYPOINT IDENTIFIER	COURSE / TRACK °M (°T)	DISTANCE (NM)	ALTITUDE	SPEED (kt)	NAV SPEC
001	IF	SORIX	-	-	-FL210	-280	RNAV 1
002	TF	KEWLU	115 (120.1)	22.04	-	-250	RNAV 1
003	TF	HALFI	118 (122.6)	15.00	-	-	RNAV 1
004	TF	DINVA	118 (122.9)	16.53	-	-	RNAV 1
005	TF	EDIZE	110 (114.8)	8.40	-	-220	RNAV 1
006	TF	TIGTU	110 (114.9)	5.45	-	-	RNAV 1
007	TF	RIKNO	110 (115.0)	4.00	-	-	RNAV 1
008	TF	WA732	200 (204.8)	5.00	-	-	RNAV 1
009	TF	WA731	290 (294.9)	4.00	-	-	RNAV 1

NEPOX 5V

SEQUENCE NUMBER	PATH TERMINATOR	WAYPOINT IDENTIFIER	COURSE / TRACK °M (°T)	DISTANCE (NM)	ALTITUDE	SPEED (kt)	NAV SPEC
001	IF	NEPOX	-	-	-FL180	-280	RNAV 1
002	TF	BUWAS	274 (278.8)	8.00	-	-	RNAV 1
003	TF	ENZAM	274 (278.6)	8.61	-	-250	RNAV 1
004	TF	ZEBWI	290 (294.9)	3.27	-	-	RNAV 1
005	TF	DUTFU	290 (294.8)	5.46	-	-	RNAV 1
006	TF	EDIZE	200 (204.8)	6.03	-	-220	RNAV 1
007	TF	TIGTU	110 (114.9)	5.45	-	-	RNAV 1
008	TF	RIKNO	110 (115.0)	4.00	-	-	RNAV 1
009	TF	WA732	200 (204.8)	5.00	-	-	RNAV 1
010	TF	WA731	290 (294.9)	4.00	-	-	RNAV 1

LIMVI 5V

SEQUENCE NUMBER	PATH TERMINATOR	WAYPOINT IDENTIFIER	COURSE / TRACK °M (°T)	DISTANCE (NM)	ALTITUDE	SPEED (kt)	NAV SPEC
001	IF	LIMVI	-	-	-FL160	-280	RNAV 1
002	TF	WA884	345 (350.0)	14.00	-	-	RNAV 1
003	TF	ENZAM	345 (349.9)	13.84	-	-250	RNAV 1
004	TF	ZEBWI	290 (294.9)	3.27	-	-	RNAV 1
005	TF	DUTFU	290 (294.8)	5.46	-	-	RNAV 1
006	TF	EDIZE	200 (204.8)	6.03	-	-220	RNAV 1
007	TF	TIGTU	110 (114.9)	5.45	-	-	RNAV 1
008	TF	RIKNO	110 (115.0)	4.00	-	-	RNAV 1
009	TF	WA732	200 (204.8)	5.00	-	-	RNAV 1
010	TF	WA731	290 (294.9)	4.00	-	-	RNAV 1

LOGDA 5V

SEQUENCE NUMBER	PATH TERMINATOR	WAYPOINT IDENTIFIER	COURSE / TRACK °M (°T)	DISTANCE (NM)	ALTITUDE	SPEED (kt)	NAV SPEC
001	IF	LOGDA	-	-	-FL190	-280	RNAV 1
002	TF	WA821	014 (018.6)	12.50	-	-	RNAV 1
003	TF	EMCEL	014 (018.7)	12.92	-	-	RNAV 1
004	TF	FOLFA	013 (018.0)	5.78	-	-250	RNAV 1
005	TF	NAHPA	011 (015.5)	11.54	-	-	RNAV 1
006	TF	DEBZU	020 (024.6)	5.00	-	-220	RNAV 1
007	TF	ABAPA	110 (114.7)	4.00	-	-	RNAV 1
008	TF	MAPIX	110 (114.8)	4.00	-	-	RNAV 1
009	TF	KUMUT	110 (114.9)	4.00	-	-	RNAV 1
010	TF	WA732	020 (024.9)	5.00	-	-	RNAV 1
011	TF	WA731	290 (294.9)	4.00	-	-	RNAV 1

AGAVA 5V

SEQUENCE NUMBER	PATH TERMINATOR	WAYPOINT IDENTIFIER	COURSE / TRACK °M (°T)	DISTANCE (NM)	ALTITUDE	SPEED (kt)	NAV SPEC
001	IF	AGAVA	-	-	-FL190	-280	RNAV 1
002	TF	VIXLO	088 (093.1)	10.98	-FL170	-	RNAV 1
003	TF	ARFEP	088 (093.2)	7.18	-	-	RNAV 1
004	TF	EMCEL	063 (067.6)	18.80	-	-	RNAV 1
005	TF	FOLFA	013 (018.0)	5.78	-	-250	RNAV 1
006	TF	NAHPA	011 (015.5)	11.54	-	-	RNAV 1
007	TF	DEBZU	020 (024.6)	5.00	-	-220	RNAV 1
008	TF	ABAPA	110 (114.7)	4.00	-	-	RNAV 1
009	TF	MAPIX	110 (114.8)	4.00	-	-	RNAV 1
010	TF	KUMUT	110 (114.9)	4.00	-	-	RNAV 1
011	TF	WA732	020 (024.9)	5.00	-	-	RNAV 1
012	TF	WA731	290 (294.9)	4.00	-	-	RNAV 1

WAYPOINT IDENTIFIER	COORDINATES	
ABAPA	52°00'36.0"N	021°11'40.0"E
AGAVA	51°34'53.1"N	019°57'38.7"E
ARFEP	51°33'56.0"N	020°26'43.1"E
BIMPA	52°22'27.8"N	019°46'29.0"E
BUWAS	52°10'47.0"N	021°47'06.8"E
DINVA	52°13'47.2"N	021°03'53.7"E
DEBZU	52°02'16.1"N	021°05'47.0"E
DUTFU	52°15'45.3"N	021°20'24.5"E
EDIZE	52°10'17.0"N	021°16'17.7"E
EMCEL	51°41'08.0"N	020°54'35.0"E
ENZAM	52°12'05.0"N	021°33'17.0"E
FOLFA	51°46'37.1"N	020°57'27.4"E
HALFI	52°22'42.8"N	020°41'14.3"E
KEWLU	52°30'45.0"N	020°20'33.0"E
KUMUT	51°57'15.2"N	021°23'24.3"E
LIMVI	51°44'42.0"N	021°41'08.0"E
LOGDA	51°17'04.0"N	020°41'38.0"E
MAPIX	51°58'55.6"N	021°17'33.0"E
NAHPA	51°57'43.7"N	021°02'24.8"E
NEPOX	52°09'33.0"N	021°59'57.1"E
RIKNO	52°06'18.9"N	021°30'13.1"E
SORIX	52°41'43.0"N	019°49'12.0"E
TIGTU	52°07'59.8"N	021°24'19.9"E
VIXLO	51°34'19.4"N	020°15'13.8"E
WA731	52°03'27.8"N	021°20'56.1"E
WA732	52°01'46.9"N	021°26'48.7"E
WA821	51°28'54.3"N	020°47'58.4"E
WA884	51°58'28.1"N	021°37'12.4"E
ZEBWI	52°13'27.8"N	021°28'27.6"E