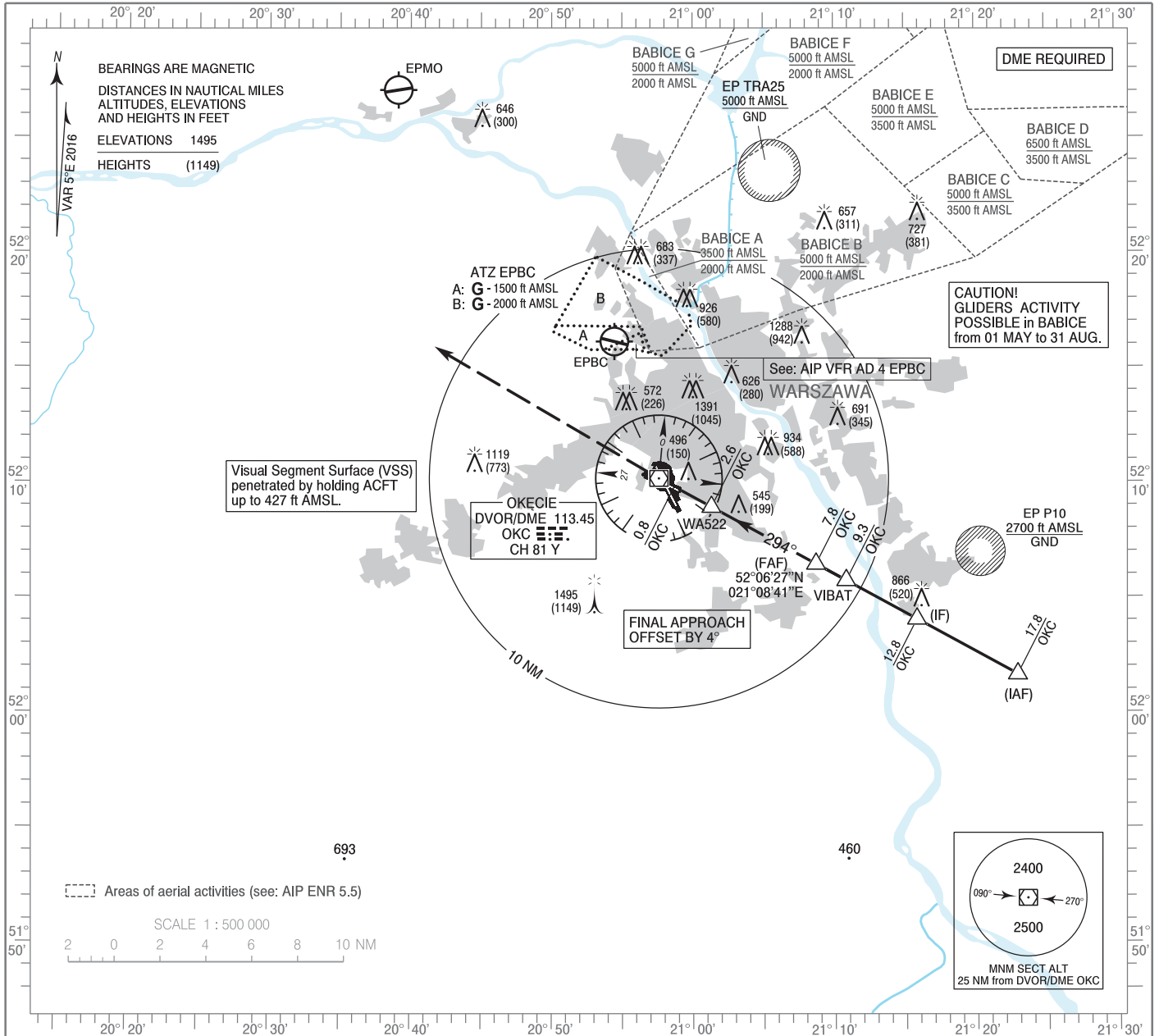


**INSTRUMENT
APPROACH
CHART - ICAO**

AERODROME ELEV 362 ft
THR RWY 29 ELEV 346 ft
HEIGHTS RELATED TO THR RWY 29

Warszawa APPROACH	128.805	Warszawa DIRECTOR	129.380
ATIS	125.055	Okęcie TOWER	118.305
	120.455	Okęcie GROUND	121.905

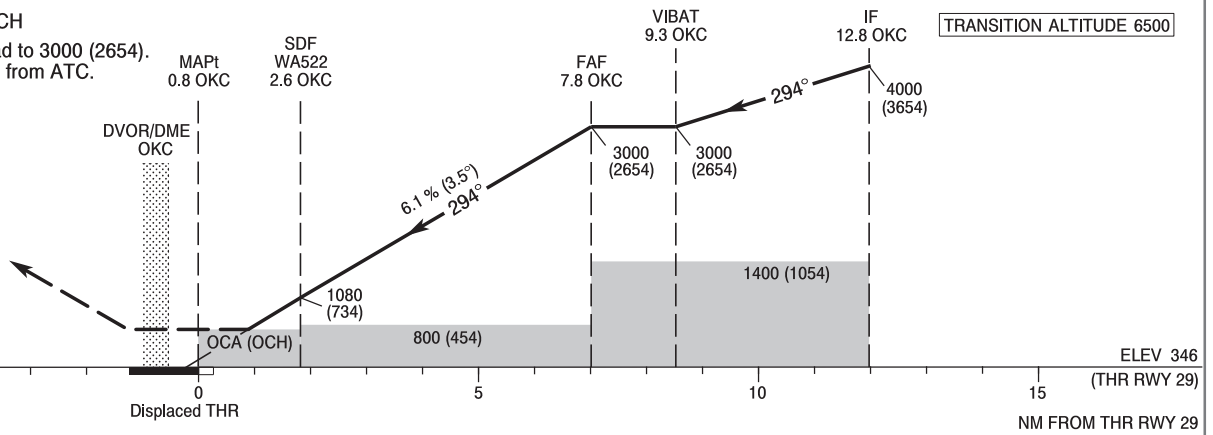
**WARSAW CHOPIN AIRPORT
VOR
RWY 29 (CAT A/B/C/D)**



Correction: Text added. Editorial changes.

MISSED APPROACH

Climb straight ahead to 3000 (2654).
Further instructions from ATC.



Cat. of ACFT	OCA (OCH)				Speed	Distance FAF - MAPt 7.0 NM						
	A	B	C	D		kt	80	100	120	140	160	180
Straight - in	750 (404)	750 (404)	750 (404)	750 (404)	Time	min : s	5 : 16	4 : 13	3 : 31	3 : 01	2 : 38	2 : 21
	When stepdown fix not received				Rate of descent	ft / min	500	620	750	870	990	1120
Circling approaches are prohibited					Final approach distance/altitude (height)							
					Distance	6	5	4	3			
					Altitude (height)	2340 (1994)	1970 (1624)	1600 (1254)	1230 (884)			