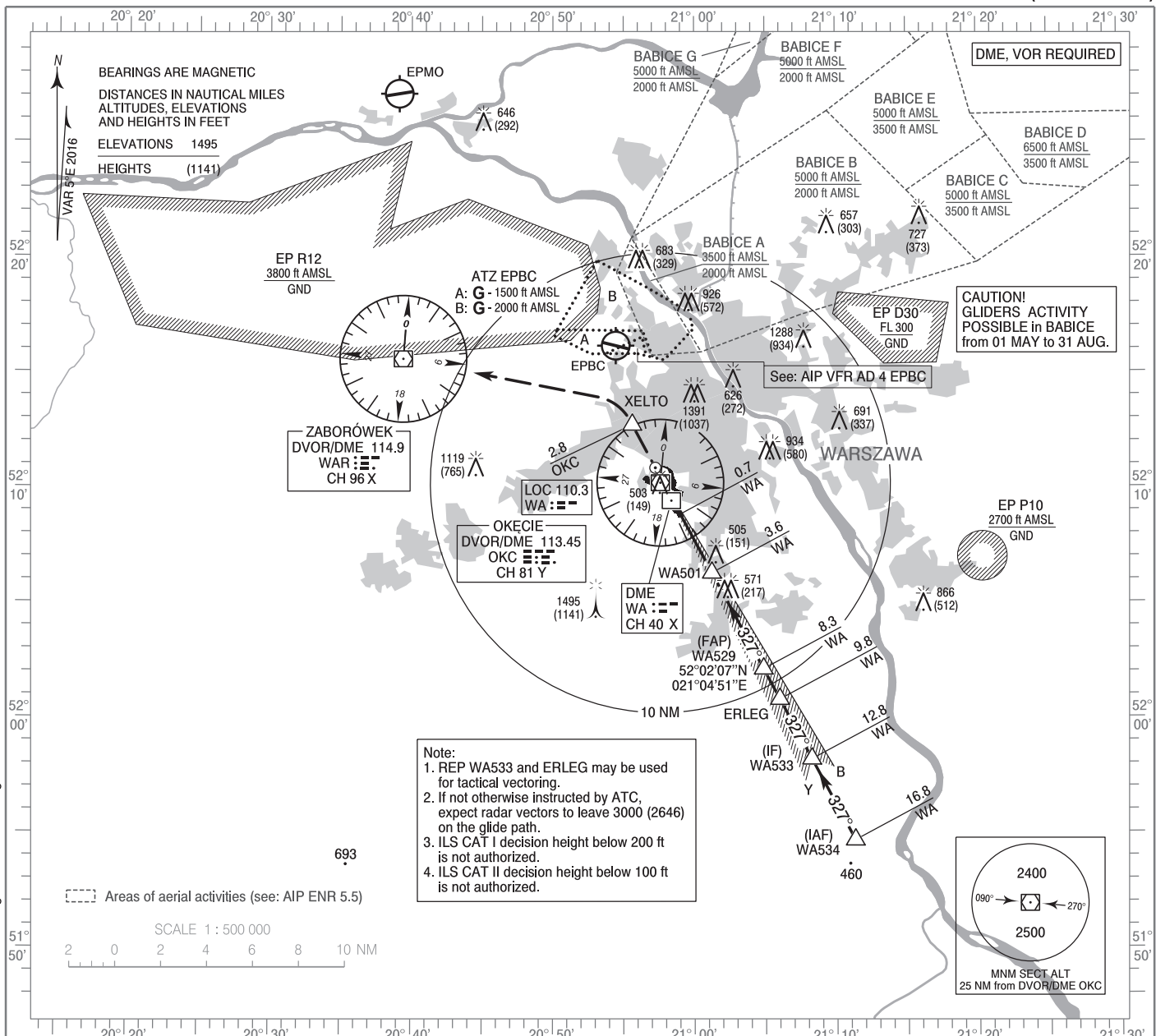


**INSTRUMENT
APPROACH
CHART - ICAO**

AERODROME ELEV 362 ft
THR RWY 33 ELEV 354 ft
HEIGHTS RELATED TO THR RWY 33

Warszawa APPROACH	128.805	Warszawa DIRECTOR	129.380
ATIS	125.055	Okęcie TOWER	118.305
	120.455	Okęcie GROUND	121.905

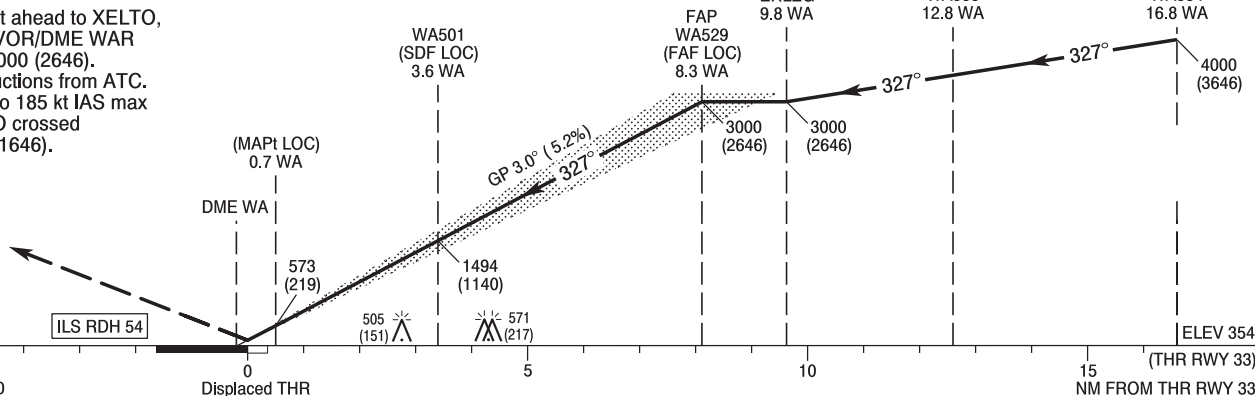
**WARSAW CHOPIN AIRPORT
ILS z CAT II & III or LOC z
RWY 33 (CAT A/B/C/D)**



MISSED APPROACH

Climb straight ahead to XELTO, turn left to DVOR/DME WAR climbing to 3000 (2646). Further instructions from ATC. Turn limited to 185 kt IAS max only if XELTO crossed below 2000 (1646).

TRANSITION ALTITUDE 6500



OCA (OCH)	A	B	C	D	Distance FAF - MAPt 7.6 NM								
					Speed	kt	80	100	120	140	160	180	
Straight - in	Cat. I	537 (183)	549 (195)	557 (203)	568 (214)	Time	min : s	5 : 43	4 : 34	3 : 49	3 : 16	2 : 51	2 : 32
	Cat. II	426 (72)	443 (89)	455 (101)	469 (115)	Rate of descent	ft / min	420	530	630	740	840	950
	LOC	760 (406)	760 (406)	760 (406)	760 (406)		When stepdown fix not received						
		820 (466)	820 (466)	820 (466)	820 (466)	Final approach distance/altitude (height)							
ILS CAT IIIA approved.					Distance	8	6	4	2				
Circling approaches are prohibited					Altitude (height)	2900 (2546)	2270 (1916)	1630 (1276)	990 (636)				

INSTRUMENT
APPROACH
CHART - ICAOWARSAW CHOPIN AIRPORT
ILS z CAT II & III or LOC z
RWY 33 (CAT A/B/C/D)

FIX / POINT	LATITUDE	LONGITUDE	FIX FORMATION	
IAF WA534	51°54'40.1"N	021°11'17.8"E	331.73° GEO (327° MAG) LOC WA	16.78 NM DME WA
IF WA533	51°58'11.5"N	021°08'15.1"E	331.73° GEO (327° MAG) LOC WA	12.78 NM DME WA
REP ERLEG	52°00'47.2"N	021°06'00.2"E	331.73° GEO (327° MAG) LOC WA	9.83 NM DME WA
FAP WA529 (FAF LOC)	52°02'06.8"N	021°04'51.0"E	331.73° GEO (327° MAG) LOC WA	8.32 NM DME WA
WA501 (SDF LOC)	52°06'16.6"N	021°01'13.7"E	331.73° GEO (327° MAG) LOC WA	3.59 NM DME WA
MAPt (LOC)	52°08'49.4"N	020°59'00.4"E	331.73° GEO (327° MAG) LOC WA	0.70 NM DME WA
XELTO	52°12'42.4"N	020°55'37.2"E	334.22° GEO (329° MAG) DVOR OKC	2.80 NM DME OKC
DVOR/DME WAR	52°15'33.3"N	020°39'25.8"E		
Final approach descent angle: 3.00°				