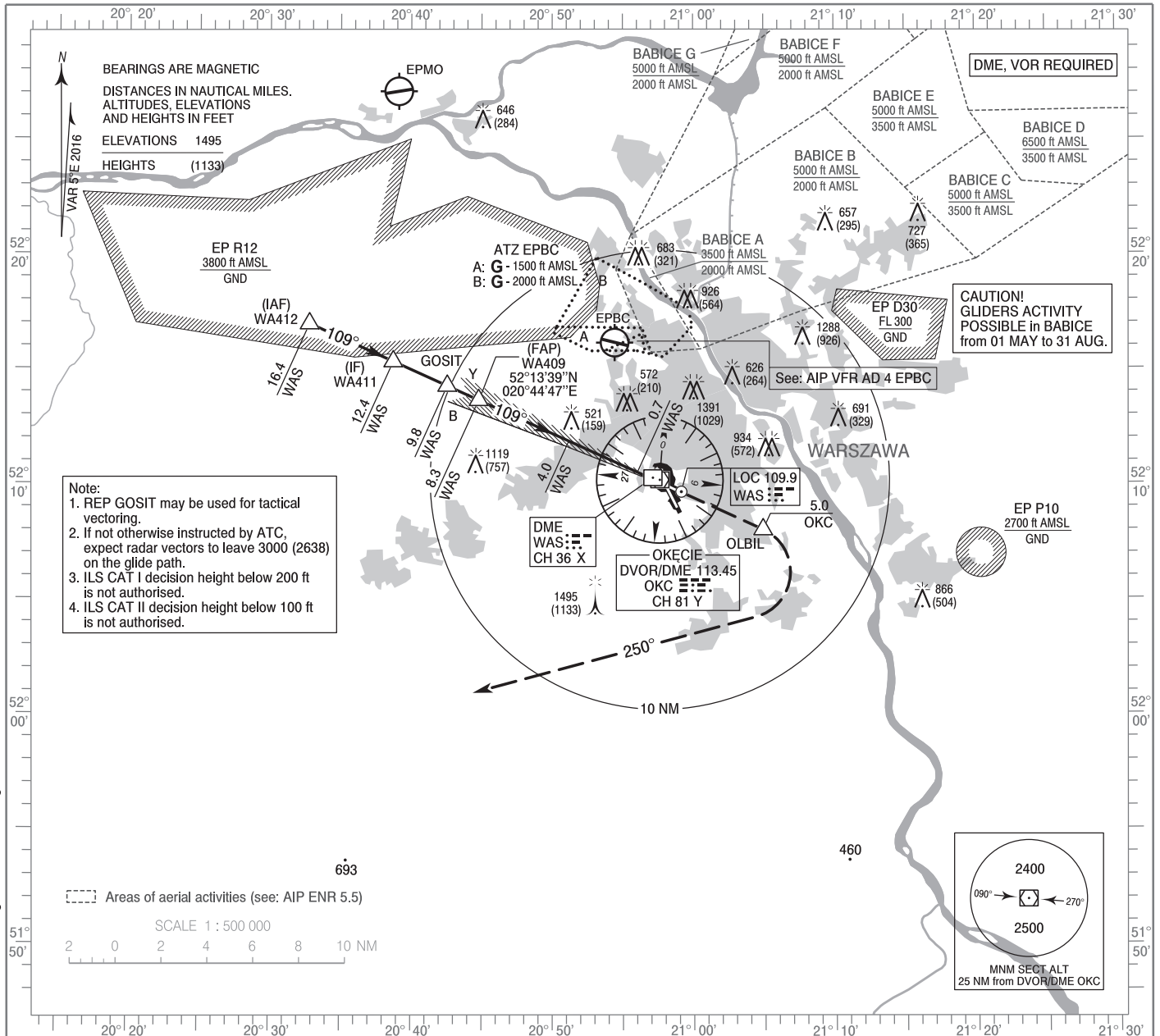


**INSTRUMENT  
APPROACH  
CHART - ICAO**

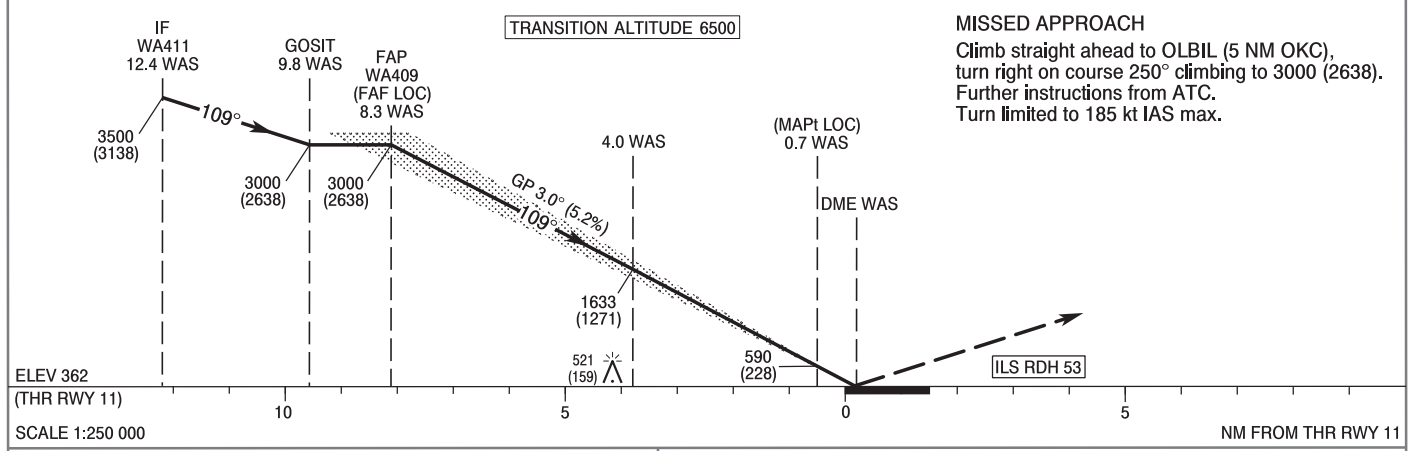
AERODROME ELEV 362 ft  
THR RWY 11 ELEV 362 ft  
HEIGHTS RELATED TO THR RWY 11

Warszawa APPROACH	128.805	Warszawa DIRECTOR	129.380
ATIS	125.055	Okecie TOWER	118.305
	120.455	Okecie GROUND	121.905

**WARSAW CHOPIN AIRPORT**  
**ILS z CAT II or LOC z  
RWY 11 (CAT A/B/C/D)**



Correction: MSA changed. Obstacle changed.



OCA (OCH)					Distance FAF - MAPT 7.6 NM								
Cat. of ACFT		A	B	C	D	Speed	kt	80	100	120	140	160	180
		Straight - in	Cat. I	561 (199)	573 (211)	581 (219)	592 (230)	Time	min : s	5 : 41	4 : 32	3 : 47	3 : 15
Cat. II	440 (78)		457 (95)	470 (108)	483 (121)	Rate of descent	ft / min	420	530	630	740	840	950
LOC	770 (408)		770 (408)	770 (408)	770 (408)		Final approach distance/altitude (height)						
Circling approaches are prohibited						Distance	8	6	4	2			
						Altitude (height)	2910 (2548)	2270 (1908)	1640 (1278)	1000 (638)			

INSTRUMENT  
APPROACH  
CHART - ICAOWARSAW CHOPIN AIRPORT  
ILS z CAT II or LOC z  
RWY 11 (CAT A/B/C/D)

FIX / POINT	LATITUDE	LONGITUDE	FIX FORMATION	
IAF WA412	52°16'57.7"N	020°32'48.0"E	114.20° GEO (109° MAG) LOC WAS	16.38 NM DME WAS
IF WA411	52°15'19.3"N	020°38'44.3"E	114.28° GEO (109° MAG) LOC WAS	12.38 NM DME WAS
REP GOSIT	52°14'15.7"N	020°42'33.9"E	114.36° GEO (109° MAG) LOC WAS	9.79 NM DME WAS
FAP WA409 (FAF LOC)	52°13'38.6"N	020°44'47.3"E	114.36° GEO (109° MAG) LOC WAS	8.29 NM DME WAS
MAPt (LOC)	52°10'30.4"N	020°56'01.6"E	114.36° GEO (109° MAG) LOC WAS	0.70 NM DME WAS
REP OLBIL	52°08'00.5"N	021°04'54.5"E	115.80° GEO (111° MAG) DVOR OKC	5.00 NM DME OKC
Final approach descent angle: 3.00°				