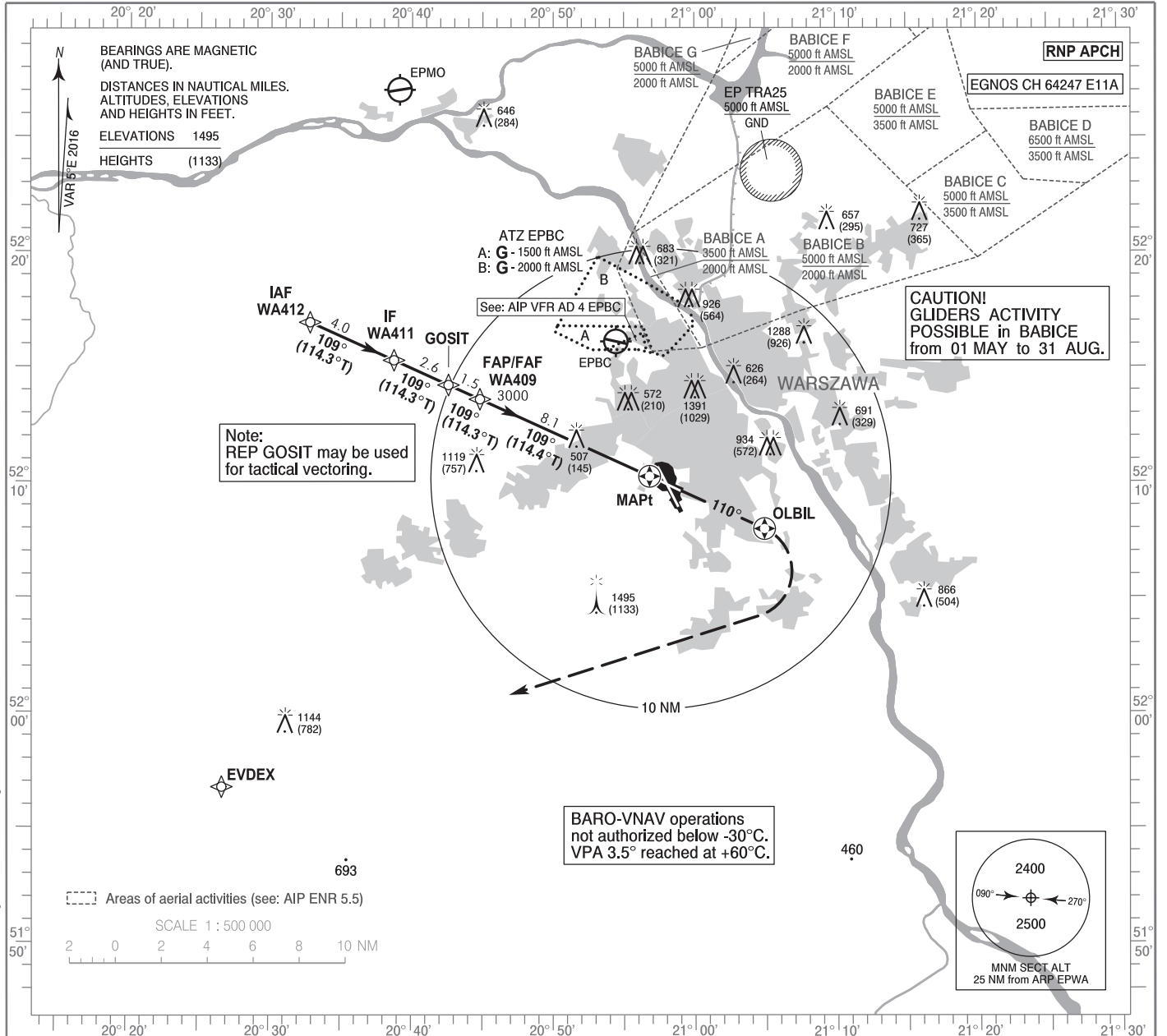


**INSTRUMENT
APPROACH
CHART - ICAO**

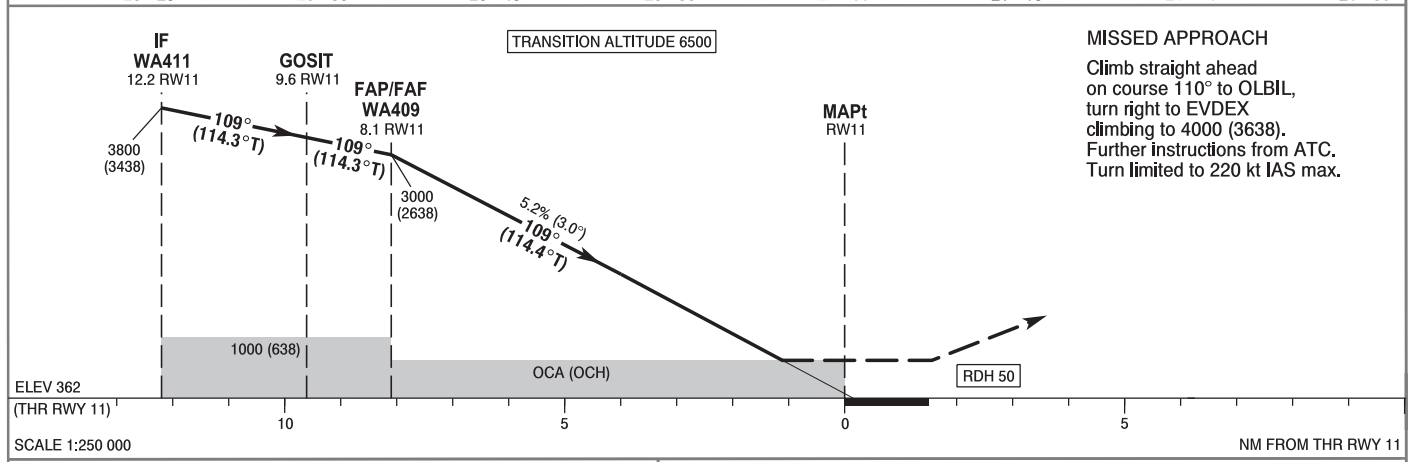
AERODROME ELEV 362 ft
THR RWY 11 ELEV 362 ft
HEIGHTS RELATED TO THR RWY 11

| | | | |
|-------------------|---------|-------------------|---------|
| Warszawa APPROACH | 128.805 | Warszawa DIRECTOR | 129.380 |
| ATIS | 125.055 | Okęcie TOWER | 118.305 |
| | 120.455 | Okęcie GROUND | 121.905 |

**WARSAW CHOPIN AIRPORT
RNP
RWY 11 (CAT A/B/C/D)**



Correction: MSA changed. Obstacle changed.



| OCA (OCH) | | | | | Distance FAF - MAPt 8.1 NM | | | | | | | | |
|------------------------------------|-------------|-----------|-----------|-----------|----------------------------|---|-------------|-------------|-------------|------------|------|------|------|
| Cat. of ACFT | A | B | C | D | Speed | kt | 80 | 100 | 120 | 140 | 160 | 180 | |
| Straight - in | LNAV | 760 (398) | 760 (398) | 760 (398) | 760 (398) | Time | min : s | 6:06 | 4:53 | 4:04 | 3:29 | 3:03 | 2:43 |
| | LNAV / VNAV | 640 (278) | 650 (288) | 660 (298) | 670 (308) | Rate of descent | ft / min | 420 | 530 | 630 | 740 | 850 | 950 |
| | LPV | 560 (198) | 572 (210) | 580 (218) | 590 (228) | Final approach distance/altitude (height) | | | | | | | |
| Circling approaches are prohibited | | | | | Distance | | 8 | 6 | 4 | 2 | | | |
| | | | | | Altitude (height) | | 2960 (2598) | 2320 (1958) | 1680 (1318) | 1040 (678) | | | |

STRONA WOLNA

INTENTIONALLY LEFT BLANK

WARSAW CHOPIN AIRPORT
RNP
RWY 11 (CAT A/B/C/D)

EPWA RNP RWY 11 FROM WA412

| SEQUENCE NUMBER | PATH TERMINATOR | WAYPOINT IDENTIFIER | FLY - OVER | COURSE/TRACK °M (°T) | DISTANCE (NM) | TURN DIRECTION | ALTITUDE | SPEED (kt) | VPA/TCH | NAV SPEC |
|-----------------|-----------------|---------------------|------------|----------------------|---------------|----------------|----------|------------|---------|----------|
| 001 | IF | WA412 | - | - | - | - | - | -220 | - | RNP APCH |
| 002 | TF | WA411 | - | 109 (114.28) | 4.00 | - | +3800 ft | - | - | RNP APCH |
| 003 | TF | GOSIT | - | 109 (114.27) | 2.58 | - | - | - | - | RNP APCH |
| 004 | TF | WA409 | - | 109 (114.34) | 1.50 | - | +3000 ft | - | - | RNP APCH |
| 005 | TF | RW11 | Y | 109 (114.36) | 8.12 | - | @412 ft | - | -3.0/50 | RNP APCH |
| 006 | CF | OLBIL | Y | 110 (114.52) | 5.49 | - | - | -220 | - | RNP APCH |
| 007 | DF | EVDEX | - | - | - | R | +4000 ft | -220 | - | RNP APCH |

| WAYPOINT IDENTIFIER | COORDINATES | |
|---------------------|-------------|--------------|
| EVDEX (MAF) | 51°56'46.5" | 020°26'40.6" |
| GOSIT | 52°14'15.7" | 020°42'33.9" |
| OLBIL (MATF) | 52°08'00.5" | 021°04'54.6" |
| RW11 (MAPt) | 52°10'17.3" | 020°56'48.2" |
| WA409 (FAP/FAF) | 52°13'38.6" | 020°44'47.3" |
| WA411 (IF) | 52°15'19.3" | 020°38'44.3" |
| WA412 (IAF) | 52°16'57.7" | 020°32'48.0" |

SBAS FAS Data Block Coding Data

| EPWA RNP RWY 11 | |
|--------------------------------------|---------------|
| Input Data | |
| Parameters | Values |
| Operation Type: | 0 |
| SBAS Provider: | 1 |
| Airport Identifier: | EPWA |
| Runway: | 11 |
| Runway Direction: | 0 |
| Approach Performance Designator: | 0 |
| Route Indicator: | |
| Reference Path Data Selector: | 0 |
| Reference Path Identifier: | E11A |
| LTP/FTP Latitude: | 521017.3100N |
| LTP/FTP Longitude: | 0205648.1700E |
| LTP/FTP Ellipsoidal Height (metres): | 141.7 |
| FPAP Latitude: | 520942.2965N |
| Delta FPAP Latitude (seconds): | -35.0135 |
| FPAP Longitude: | 0205852.9025E |
| Delta FPAP Longitude (seconds): | 124.7325 |
| Threshold Crossing Height: | 50.0 |
| TCH Units Selector: | 0 |
| Glidepath Angle (degrees): | 3.00 |
| Course Width (metres): | 105.00 |
| Length Offset (metres): | 304 |
| HAL (metres): | 40.0 |
| VAL (metres): | 35.0 |

| Output Data | |
|----------------------|--|
| Data Block | 10 01 17 10 05 0B 00 00 01 31 31 05 BC BA 63 16 54 46 FD 08 89 19 75 EE FE 79 CE 03 F4 01 2C 01 64 26 C8 AF 68 BE 41 B1 |
| Calculated CRC Value | 68BE41B1 |

| Required Additional Data (not CRC wrapped) | |
|--|-------|
| ICAO Code | WA |
| LTP/FTP Orthometric Height (metres) | 110.2 |