

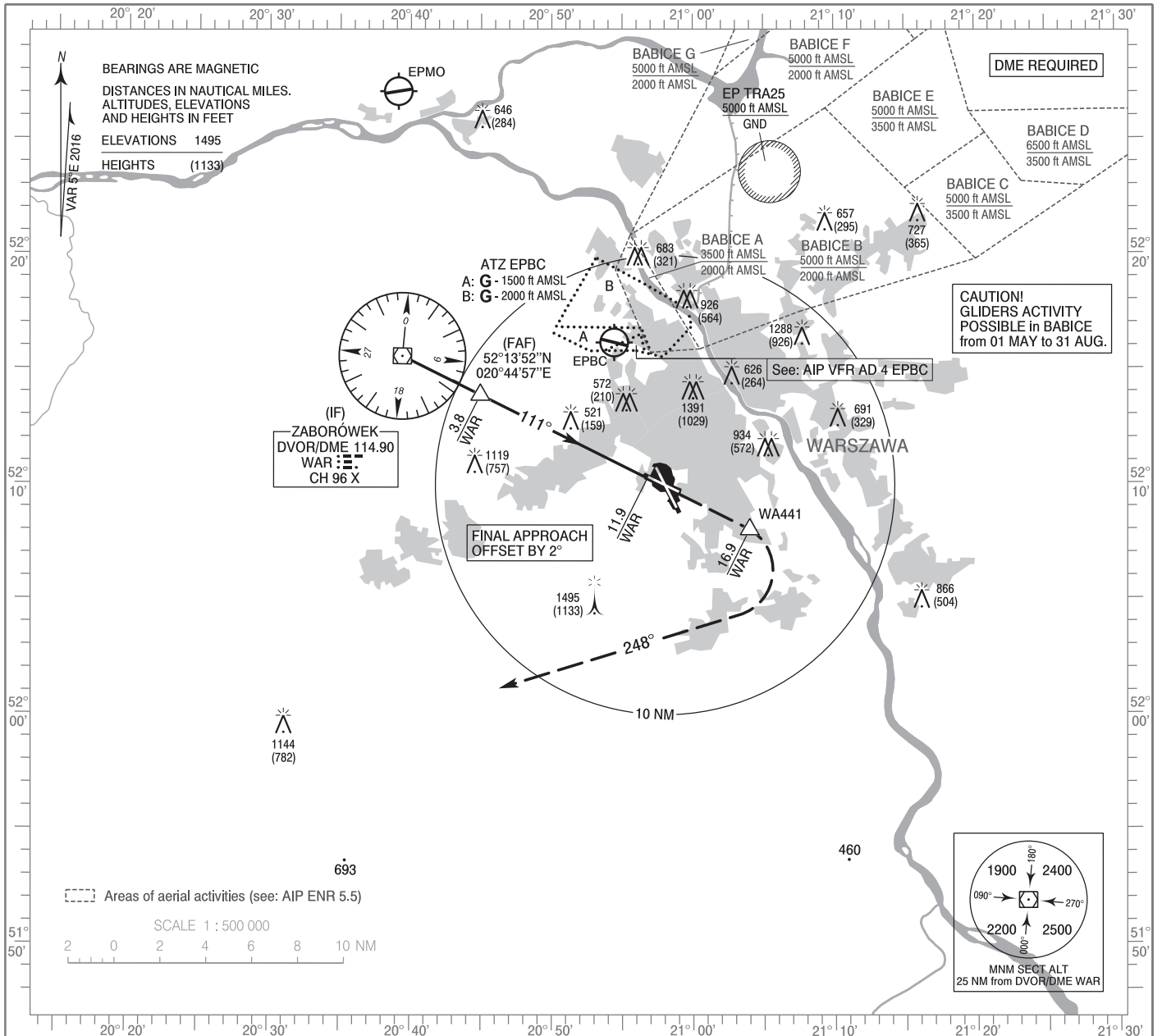
**INSTRUMENT
APPROACH
CHART - ICAO**

AERODROME ELEV 362 ft
THR RWY 11 ELEV 362 ft
HEIGHTS RELATED TO AD ELEV

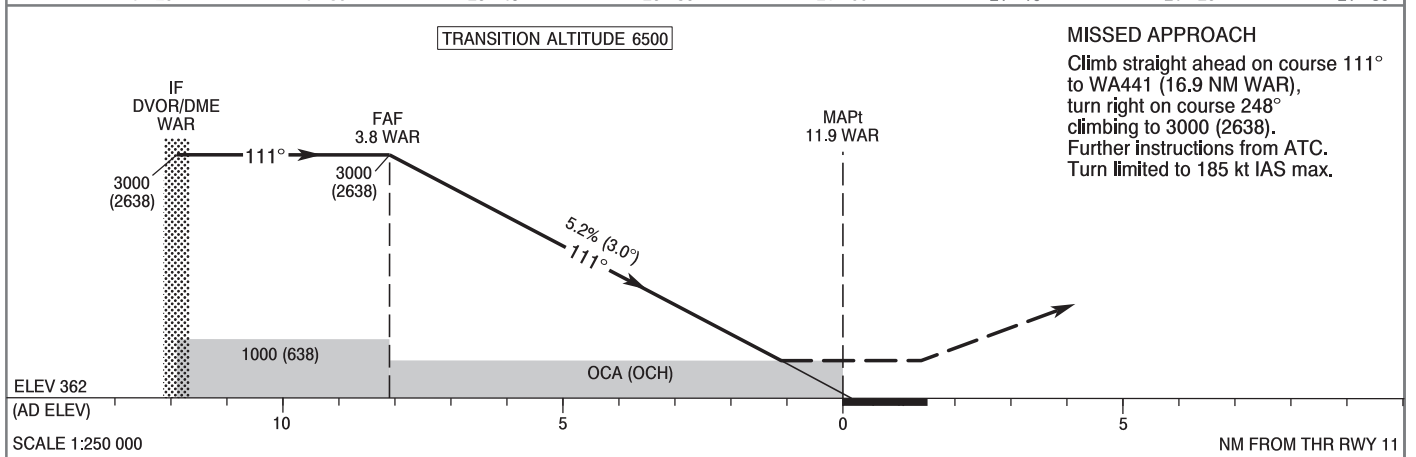
Warszawa APPROACH	128.805	Warszawa DIRECTOR	129.380
ATIS	125.055	Okęcie TOWER	118.305
	120.455	Okęcie GROUND	121.905

WARSAW CHOPIN AIRPORT

**VOR y
RWY 11 (CAT A/B/C/D)**



Correction: MSA changed. Obstacle changed.



MISSED APPROACH
 Climb straight ahead on course 111° to WA441 (16.9 NM WAR), turn right on course 248° climbing to 3000 (2638). Further instructions from ATC. Turn limited to 185 kt IAS max.

Cat. of ACFT	OCA (OCH)				Distance FAF - MAPt 8.1 NM							
	A	B	C	D	Speed	kt	80	100	120	140	160	180
Straight - in	770 (408)	770 (408)	770 (408)	770 (408)	Time	min : s	6 : 06	4 : 53	4 : 04	3 : 29	3 : 03	2 : 43
					Rate of descent	ft / min	420	530	630	740	840	950
Circling approaches are prohibited					Final approach distance/altitude (height)							
					Distance		4	6	8	10		
					Altitude (height)		2930 (2568)	2290 (1928)	1650 (1288)	1020 (658)		

**INSTRUMENT
APPROACH
CHART - ICAO**

WARSAW CHOPIN AIRPORT
VOR y
RWY 11 (CAT A/B/C/D)

FIX / POINT	LATITUDE	LONGITUDE	FIX FORMATION	
IF DVOR/DME WAR	52°15'33.3"N	020°39'25.8"E		
FAF	52°13'52.3"N	020°44'57.0"E	116.38° GEO (111° MAG) DVOR WAR	3.79 NM DME WAR
MAPt	52°10'14.7"N	020°56'46.2"E	116.38° GEO (111° MAG) DVOR WAR	11.92 NM DME WAR
WA441	52°08'00.9"N	021°04'00.0"E	116.38° GEO (111° MAG) DVOR WAR	16.90 NM DME WAR
Final approach descent angle: 3.00°				