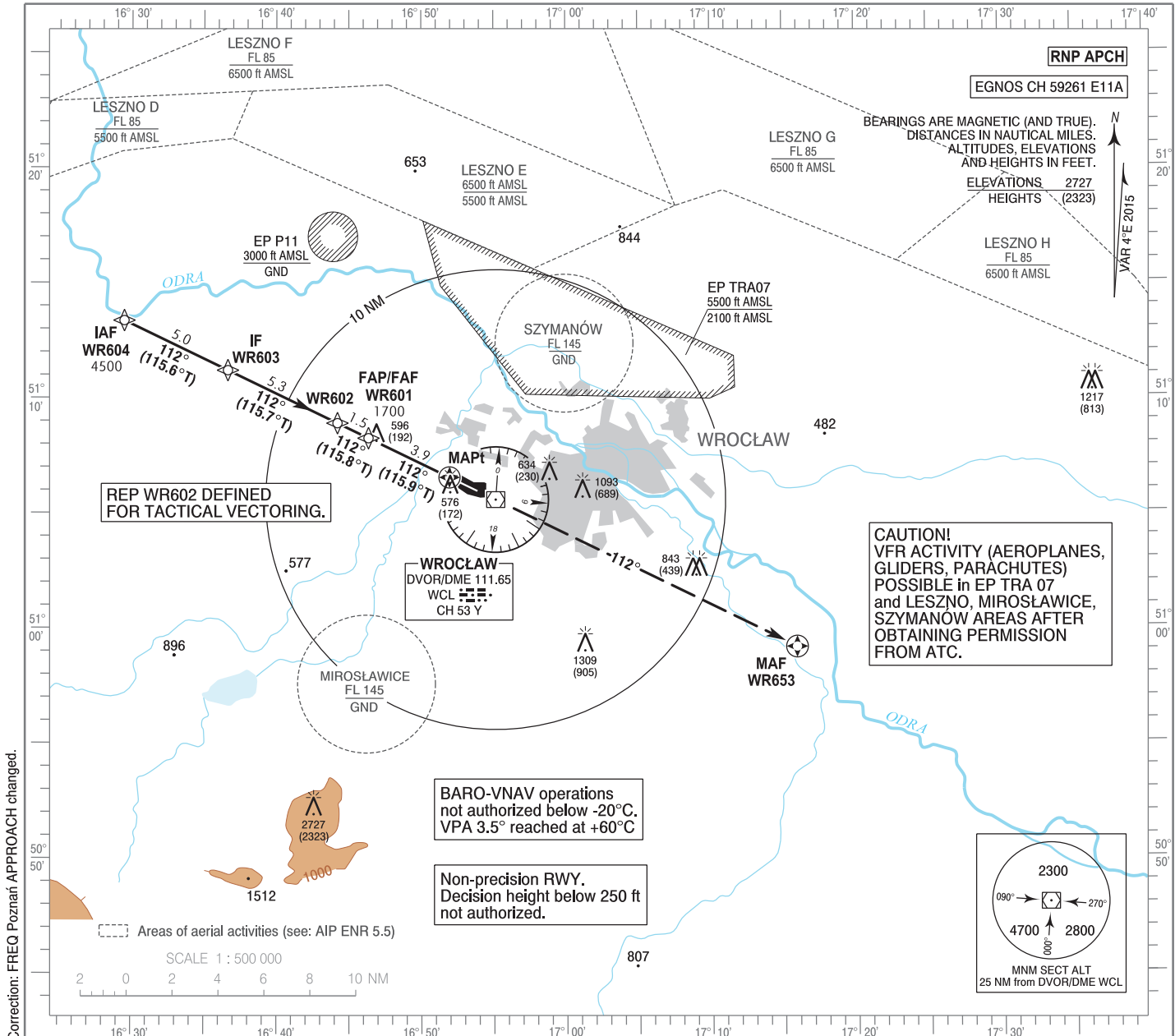


**INSTRUMENT
APPROACH
CHART - ICAO**

AERODROME ELEV 406 ft
THR RWY 11 ELEV 404 ft
HEIGHTS RELATED TO THR RWY 11

Poznań APPROACH 123.040, 128.925
Wrocław TOWER 120.255
ATIS 124.330

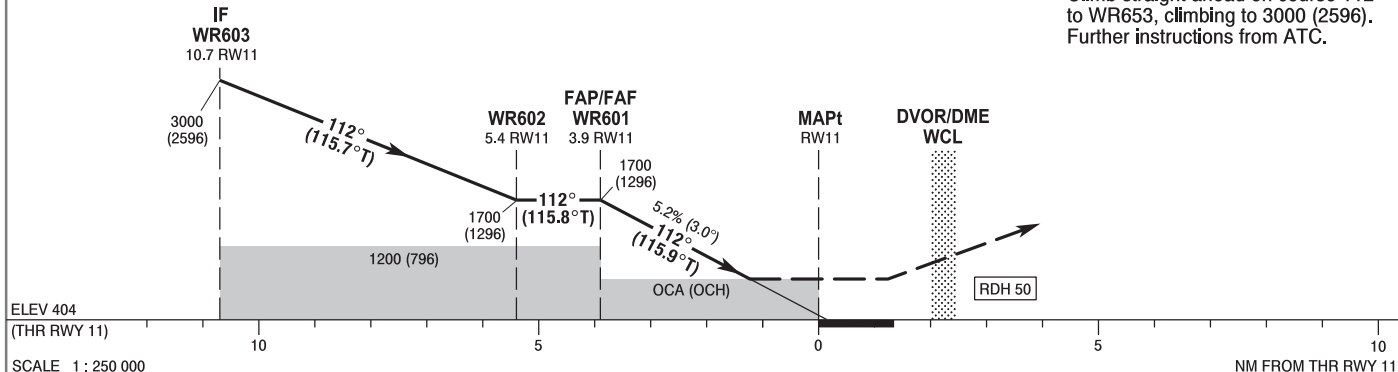
**Wrocław - Strachowice
RNP
RWY 11 (CAT A/B/C/D)**



Correction: FREQ Poznań APPROACH changed.

TRANSITION ALTITUDE 6500

MISSED APPROACH
Climb straight ahead on course 112° to WR653, climbing to 3000 (2596). Further instructions from ATC.



Cat. of ACFT	OCA (OCH)				Distance FAF - MAPt 3.9 NM								
	A	B	C	D	Speed	kt	80	100	120	140	160	180	
Straight - in	LNAV	850 (446)	850 (446)	850 (446)	850 (446)	Time	min : s	2 : 57	2 : 21	1 : 58	1 : 41	1 : 29	1 : 19
	LNAV / VNAV	710 (306)	720 (316)	730 (326)	740 (336)	Rate of descent	ft / min	420	530	630	740	840	950
	LPV	612 (208)	624 (220)	632 (228)	642 (238)		Final approach distance/altitude (height)						
Circling (OCH AAL)*	880 (474)	900 (494)	1030 (624)	1490 (1084)	Distance			3	2				
*Circling south of aerodrome only.					Altitude (height)			1420 (1014)	1100 (696)				