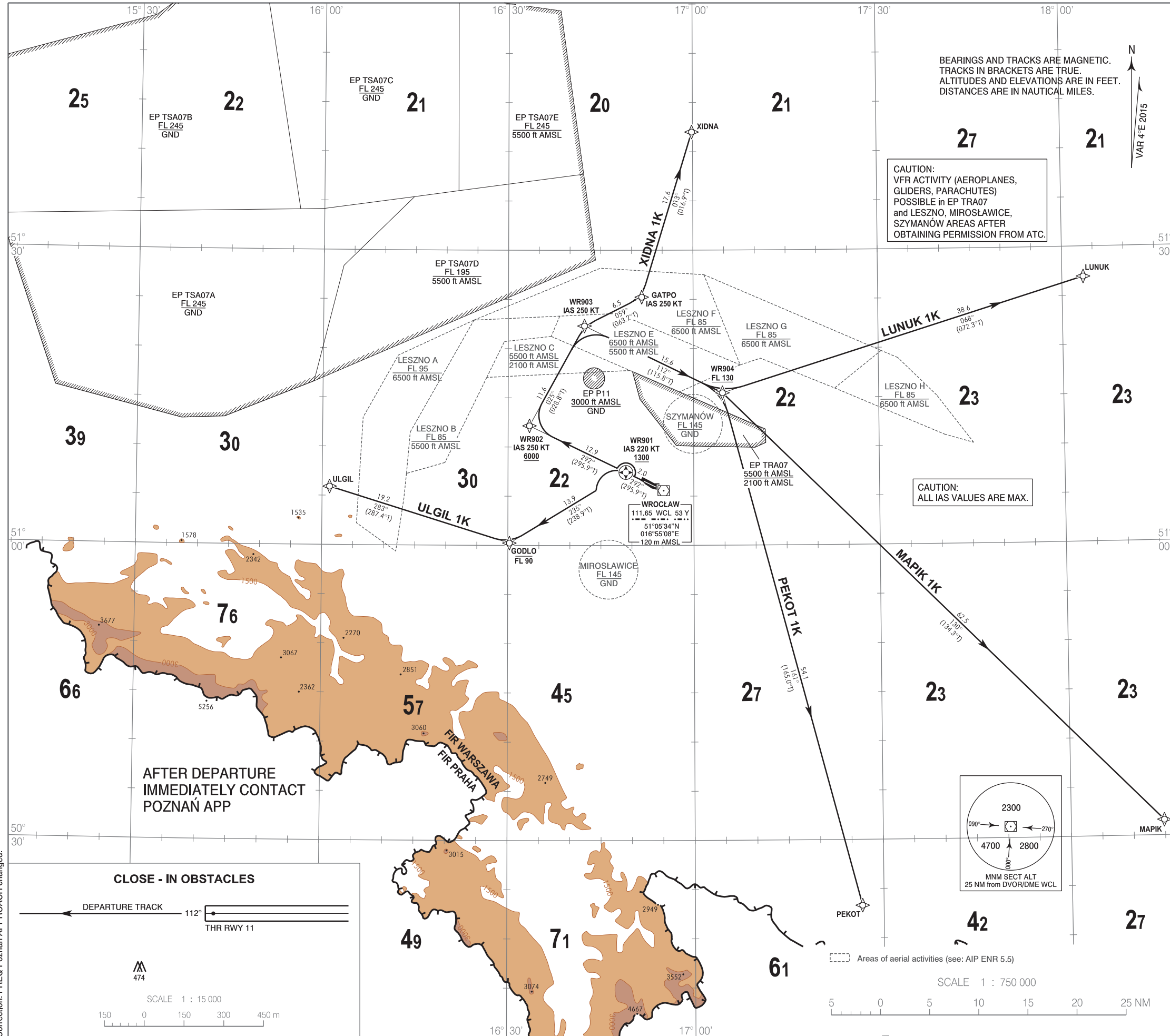


**RNAV 1 (GNSS)
STANDARD DEPARTURE CHART
INSTRUMENT (SID) - ICAO**

TRANSITION ALTITUDE 6500

Poznań APPROACH 123.040, 128.925
Wrocław DELIVERY 121.805
Wrocław TOWER 120.255

**Wrocław - Strachowice
RWY 29**



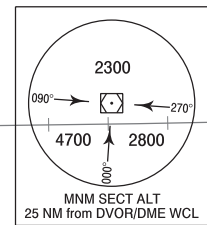
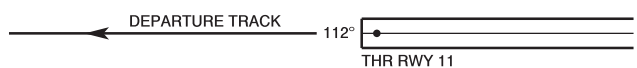
BEARINGS AND TRACKS ARE MAGNETIC.
TRACKS IN BRACKETS ARE TRUE.
ALTITUDES AND ELEVATIONS ARE IN FEET.
DISTANCES ARE IN NAUTICAL MILES.

CAUTION:
VFR ACTIVITY (AEROPLANES,
GLIDERS, PARACHUTES)
POSSIBLE in EP TRAO7
and LESZNO, MIROSLAWICE,
SZYMANÓW AREAS AFTER
OBTAINING PERMISSION FROM ATC.

CAUTION:
ALL IAS VALUES ARE MAX.

AFTER DEPARTURE
IMMEDIATELY CONTACT
POZNAŃ APP

CLOSE - IN OBSTACLES



Areas of aerial activities (see: AIP ENR 5.5)

SCALE 1 : 750 000



1. RNAV 1 approval required to conduct these procedures without additional restrictions. However it is possible to utilize RNAV 1 trajectories by RNAV 5 only approved aircraft. The following restriction apply: A/c equipped with RNAV 5 systems without navigation database, and requiring manual data input are exempted from the utilization of RNAV 1 procedures.
2. All aircraft which can not follow and utilize RNAV 1 procedures shall advise ATC before start up. Radar vectoring will be provided, usually along published procedures.
3. Expect direct routing/shortcuts by ATC whenever possible (especially during off-peak hours).
4. MAX IAS during initial turn as indicated in route description.
5. Aircraft unable to achieve SID profile restrictions must request non-standard departure from ATC before start-up.

RADIO COMMUNICATION FAILURE PROCEDURE

- SET TRANSPONDER TO 7600
- a) Continue on assigned and acknowledged SID. After 3 minutes climb to FPL flight level.
 - b) If being vectored, continue on assigned heading for 3 minutes then proceed direct to last SID WP climbing to FPL flight level.

Correction: FREQ Poznań APPROACH changed.