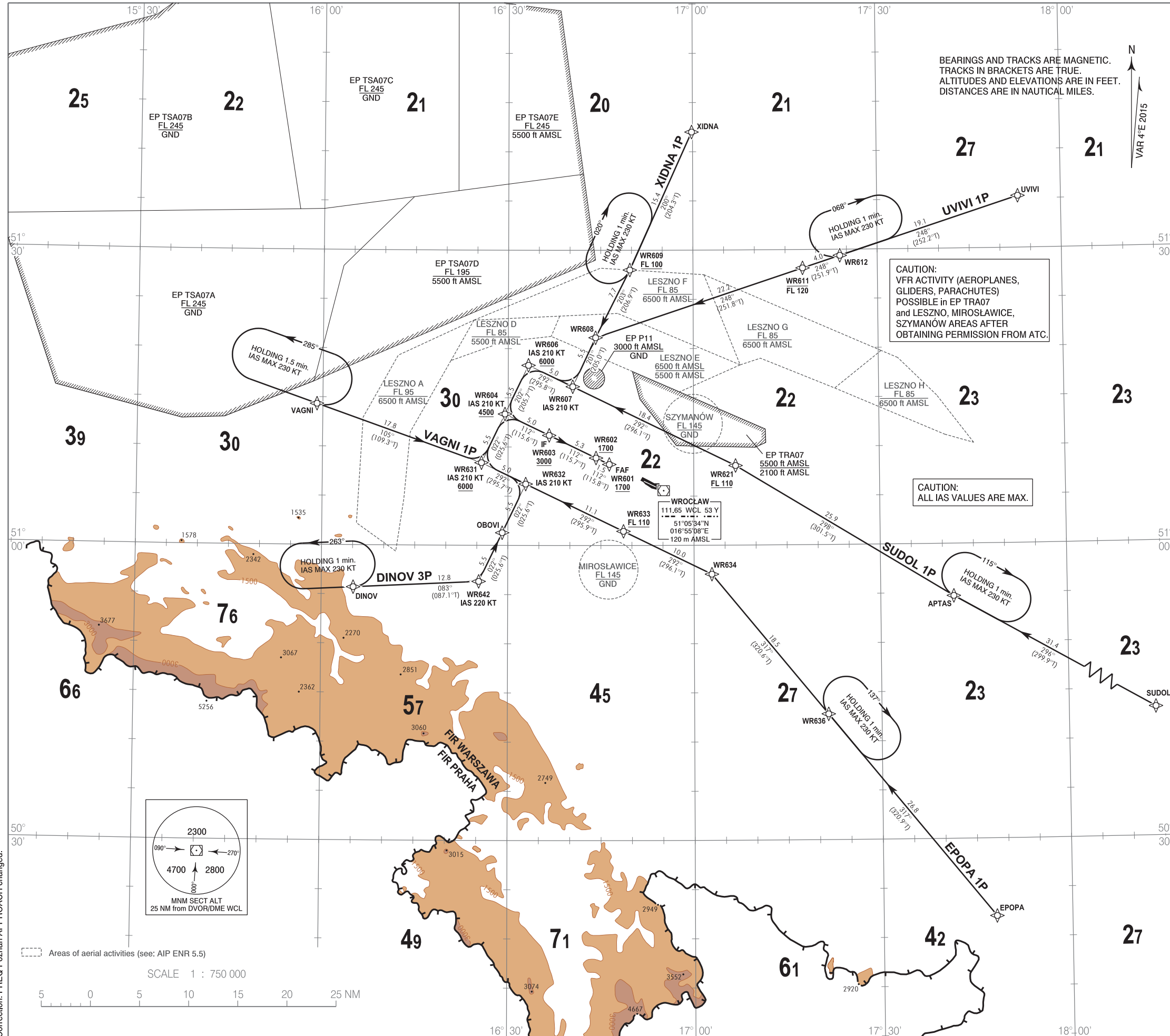


**RNAV 1 (GNSS)
STANDARD ARRIVAL CHART
INSTRUMENT (STAR) - ICAO**

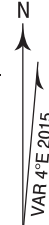
TRANSITION ALTITUDE 6500

Poznań APPROACH 123.040, 128.925
Wrocław TOWER 120.255
ATIS 124.330

**Wrocław - Strachowice
RWY 11**



BEARINGS AND TRACKS ARE MAGNETIC.
TRACKS IN BRACKETS ARE TRUE.
ALTITUDES AND ELEVATIONS ARE IN FEET.
DISTANCES ARE IN NAUTICAL MILES.



1. RNAV 1 approval required to conduct these procedures without additional restrictions. However it is possible to utilize RNAV 1 trajectories by RNAV 5 only approved aircraft. The following restriction apply: A/c equipped with RNAV 5 systems without navigation database, and requiring manual data input are exempted from the utilization of RNAV 1 procedures.
2. All aircraft which can not follow and utilize RNAV 1 trajectories shall advise ATC upon first contact. Radar vectoring will be provided, usually along published procedures.
3. Holding patterns as directed by ATC, available for non RNAV 1 approved aircraft.
4. Vertical planning information: air crews should plan for possible descent clearance in accordance with vertical restrictions specified on chart. Actual descent clearance will be as directed by ATC. If possible, CDA technique should be applied.
5. Expect direct routing/shortcuts by ATC whenever possible (especially during off-peak hours). The turn to final approach is usually performed by radar vectors to expedite traffic handling and for separation reasons.

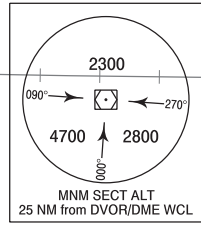
RADIO COMMUNICATION FAILURE PROCEDURE

- RNAV 1 APPROVED AIRCRAFT:
- a) If STAR was assigned and acknowledged by air crew, set transponder to 7600, continue with FPL and assigned STAR, then execute approach (ILS or VOR) and land. Descending shall be executed in accordance with vertical restrictions specified on chart after 2 min. from setting 7600.
 - b) If STAR was assigned and acknowledged by air crew and vectoring was initiated, set transponder to 7600 and continue on assigned heading and last cleared and acknowledged altitude for 2 min. (from setting 7600). Then proceed direct to FAF, execute approach (ILS or VOR) and land. Descending shall be executed in accordance with vertical restrictions specified on chart.
 - c) If STAR was not assigned, set transponder to 7600, proceed according to FPL and execute approach (ILS or VOR) and land. Descending shall be executed in accordance with vertical restrictions specified on chart after 2 min. from setting 7600.

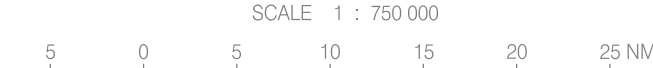
- RNAV 1 NOT APPROVED AIRCRAFT:
- Set transponder to 7600 and continue flight at FL/altitude last assigned by ATC to DVOR/DME WCL. Descend over DVOR/DME WCL to altitude 3800 ft and then execute an instrument approach for RWY 29 and conduct another approach and landing on the appropriate RWY depending on wind conditions and other circumstances.

CAUTION:
VFR ACTIVITY (AEROPLANES,
GLIDERS, PARACHUTES)
POSSIBLE in EP TRA07
and LESZNO, MIROSLAWICE,
SZYMANÓW AREAS AFTER
OBTAINING PERMISSION FROM ATC.

CAUTION:
ALL IAS VALUES ARE MAX.



Areas of aerial activities (see: AIP ENR 5.5)



Correction: FREQ Poznań APPROACH changed.