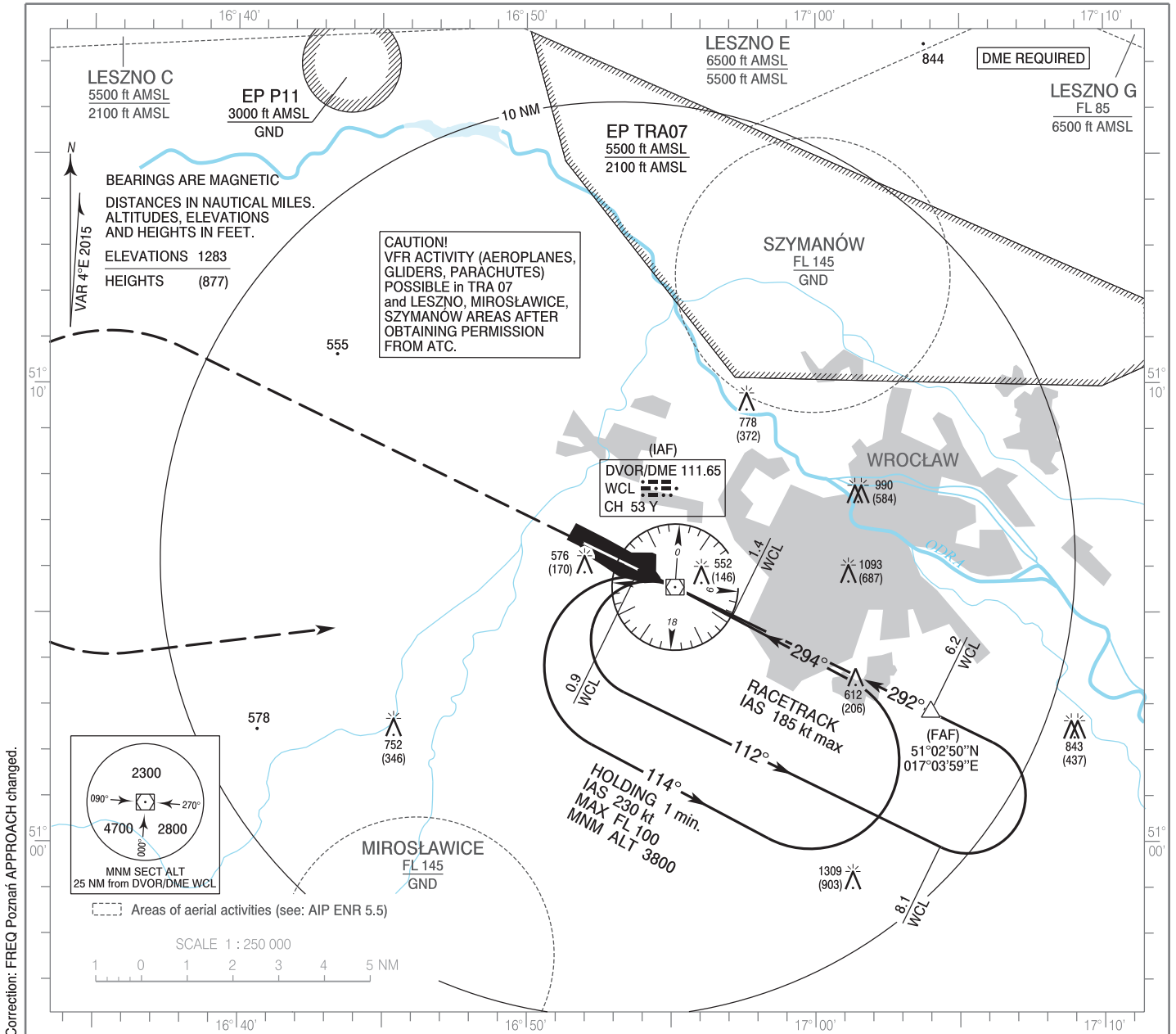


**INSTRUMENT  
APPROACH  
CHART - ICAO**

AERODROME ELEV 406 ft  
THR RWY 29 ELEV 401 ft  
HEIGHTS RELATED TO AD ELEV

Poznań APPROACH 123.040, 128.925  
Wrocław TOWER 120.255  
ATIS 124.330

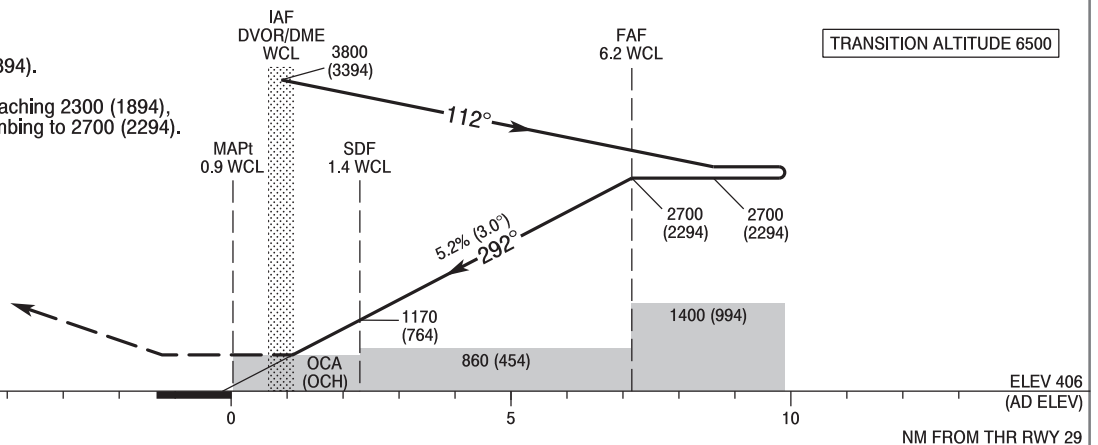
**Wrocław - Strachowice  
VOR y  
RWY 29 (CAT A/B/C/D)**



Correction: FREQ Poznań APPROACH changed.

**MISSED APPROACH**

Climb straight ahead to 2300 (1894).  
Further instructions from ATC.  
If no instructions issued, after reaching 2300 (1894),  
turn left to DVOR/DME WCL climbing to 2700 (2294).  
Turn limited to 240 kt IAS max.



SCALE 1 : 250 000

NM FROM THR RWY 29

OCA (OCH)					Distance FAF - MAPt 5.3 NM							
Cat. of ACFT	A	B	C	D	Speed	kt	80	100	120	140	160	180
Straight - in	800 (394)	800 (394)	800 (394)	800 (394)	Time	min : s	5 : 19	4 : 15	3 : 33	3 : 20	2 : 39	2 : 22
	When stepdown fix not received				Rate of descent	ft / min	421	527	632	737	843	948
	860 (454)	860 (454)	860 (454)	860 (454)	Final approach distance / altitude (height)							
Circling*	880 (474)	900 (494)	1000 (594)	1100 (694)	Distance		6	5	4	3		
					Altitude (height)		2630 (2224)	2310 (1904)	2000 (1594)	1680 (1274)		