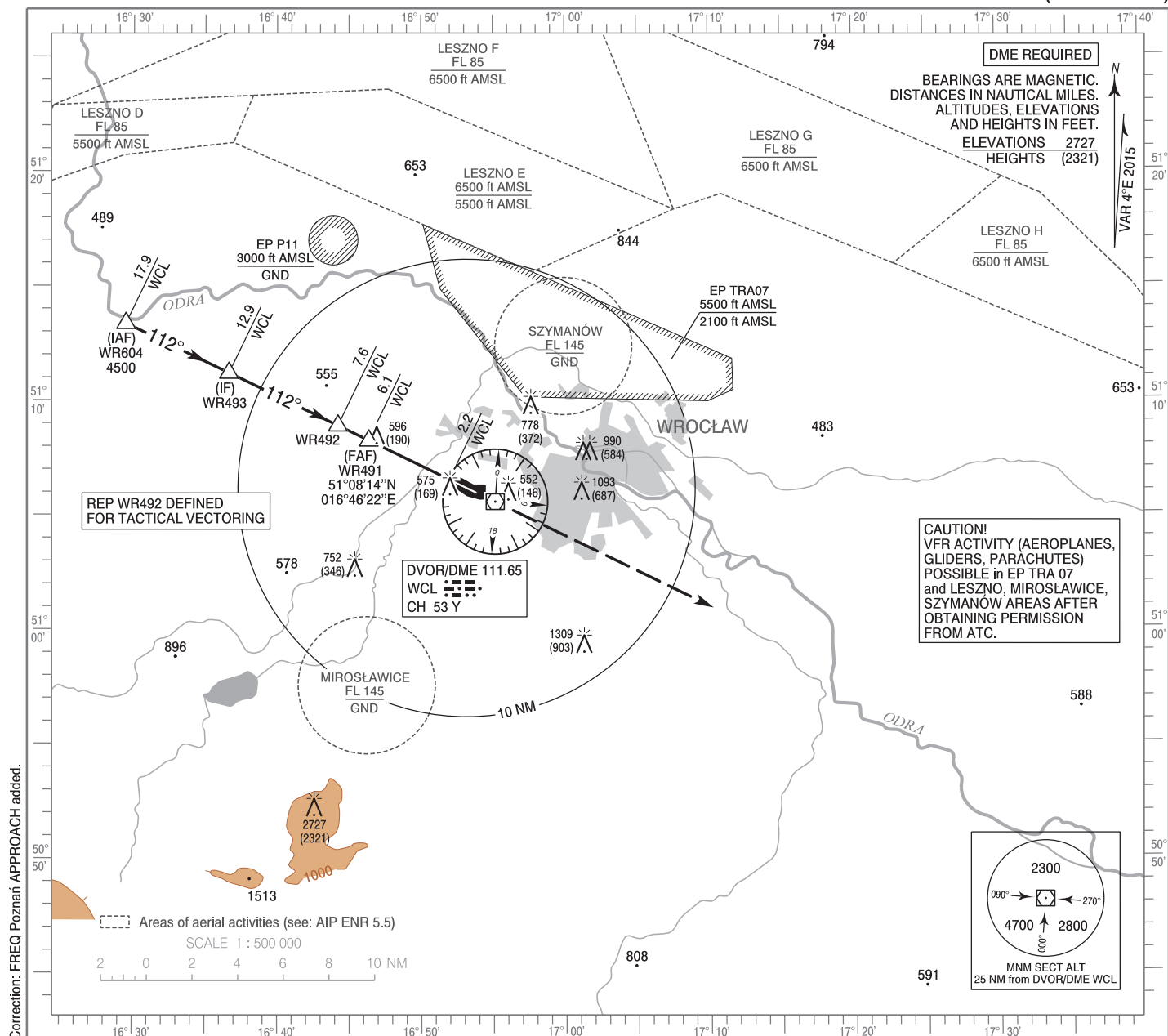


**INSTRUMENT  
APPROACH  
CHART - ICAO**

AERODROME ELEV 406 ft  
THR RWY 11 ELEV 404 ft  
HEIGHTS RELATED TO AD ELEV

Poznań APPROACH 127.230, 128.925  
Wrocław TOWER 120.255  
ATIS 124.330

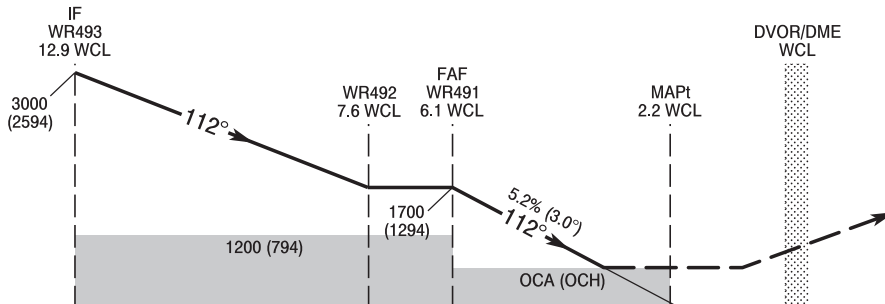
**Wrocław - Strachowice  
VOR  
RWY 11 (CAT A/B/C/D)**



Correction: FREQ Poznań APPROACH added.

TRANSITION ALTITUDE 6500

**MISSED APPROACH**  
Climb straight ahead to 3000 (2594).  
Further instructions from ATC.



SCALE 1 : 250 000

NM FROM THR RWY 11

Cat. of ACFT	OCA (OCH)				Speed	kt	Distance FAF - MAPt 3.9 NM					
	A	B	C	D			80	100	120	140	160	180
Straight - in	850 (444)	850 (444)	850 (444)	850 (444)	Time	min : s	2 : 56	2 : 21	1 : 57	1 : 41	1 : 28	1 : 18
					Rate of descent	ft / min	425	531	637	743	849	955
					Final approach distance / altitude (height)							
Circling*	880 (474)	900 (494)	1000 (594)	1100 (694)	Distance		6	5	4			
*Circling south of aerodrome only.					Altitude (height)		1660 (1254)	1340 (934)	1020 (614)			

**INSTRUMENT  
APPROACH  
CHART - ICAO**

**WROCLAW / Strachowice  
VOR  
RWY 11 (CAT A/B/C/D)**

FIX / POINT	LATITUDE	LONGITUDE	FIX FORMATION	
IAF WR604	51°13'21.1"N	016°29'29.0"E	295.94° GEO (292° MAG) DVOR WCL	17.94 NM DME WCL
IF WR493	51°11'11.3"N	016°36'39.0"E	295.94° GEO (292° MAG) DVOR WCL	12.94 NM DME WCL
WR492	51°08'53.5"N	016°44'13.3"E	295.94° GEO (292° MAG) DVOR WCL	7.64 NM DME WCL
FAF WR491	51°08'14.4"N	016°46'22.0"E	295.94° GEO (292° MAG) DVOR WCL	6.14 NM DME WCL
MAPt	51°06'32.1"N	016°51'57.3"E	295.94° GEO (292° MAG) DVOR WCL	2.23 NM DME WCL
Final approach descent angle: 3.00°				